

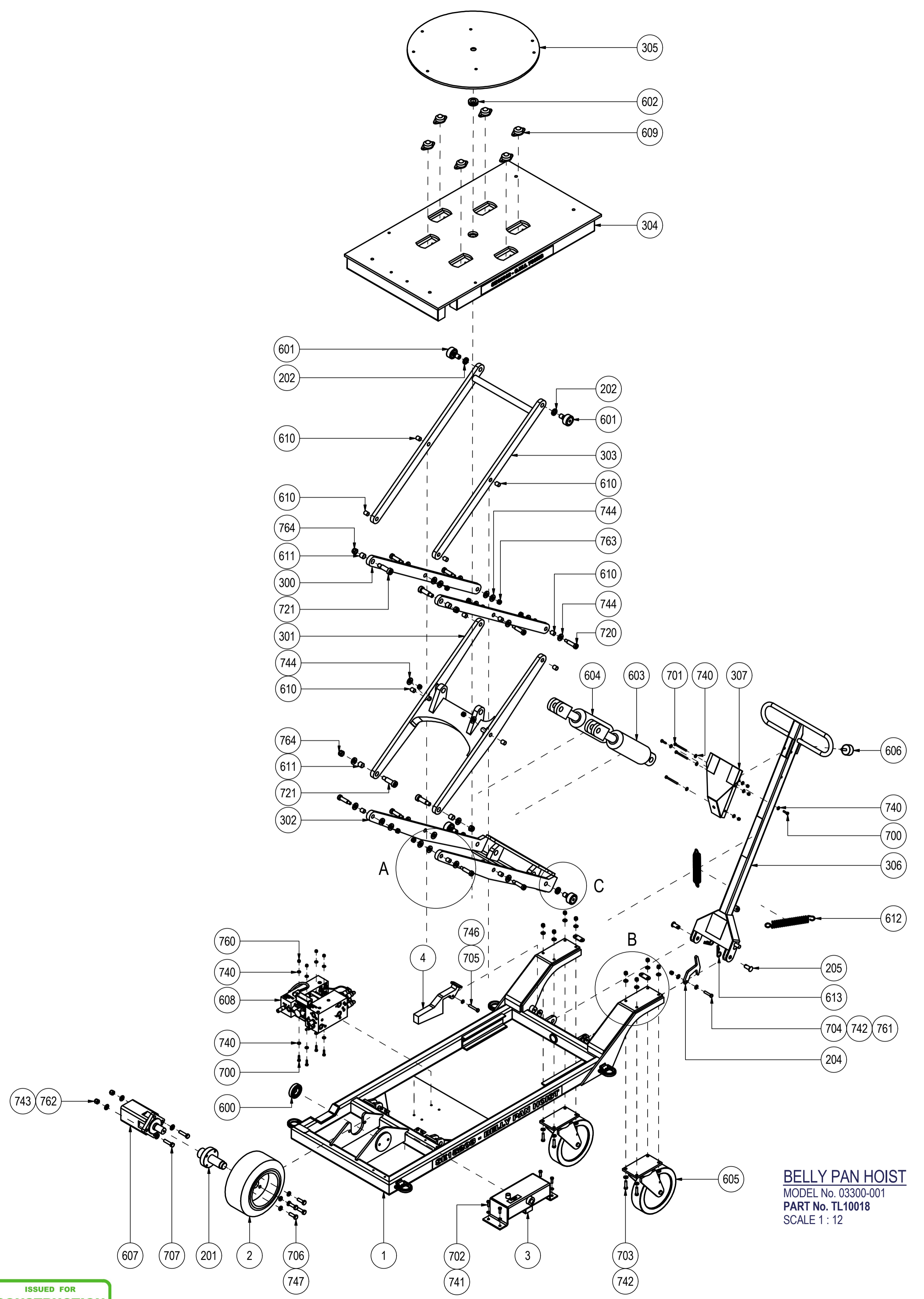
THIS DRAWING IS TENDERED IN CONFIDENCE FOR THE SOLE PURPOSE OF AIDING BUSINESS BETWEEN THE RECIPIENT AND MECENSOL PTY LTD. THE DELIVERY OF THIS DOCUMENT BY MECENSOL CONVEYS NO PROPERTY RIGHTS. THEREIN NOR IN MATTERS DISCLOSED THEREIN. PERMISSION IS EXPRESSLY WITHHELD TO REPRODUCE ANY PART OF THIS DOCUMENT OR TO CONVEY TO OTHERS INFORMATION CONTAINED IN SUCH DOCUMENTS.

H
G
F
E
D
C
B
A

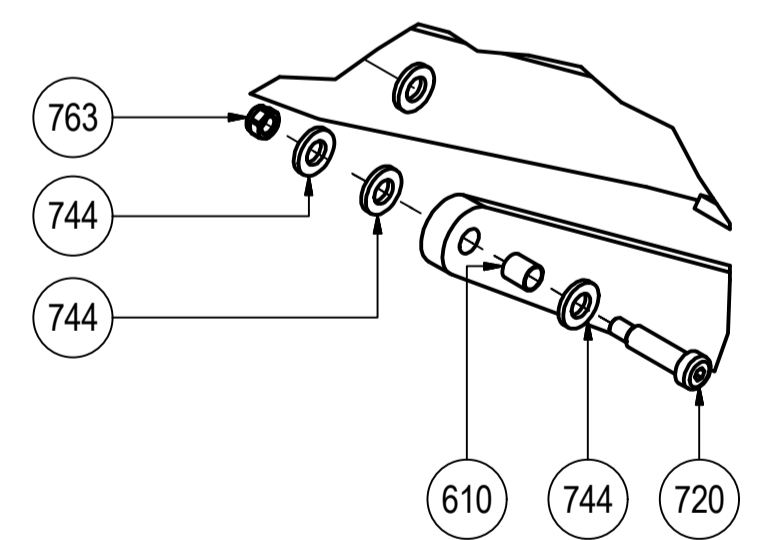
H
G
F
E
D
C
B
A

ITEM LIST

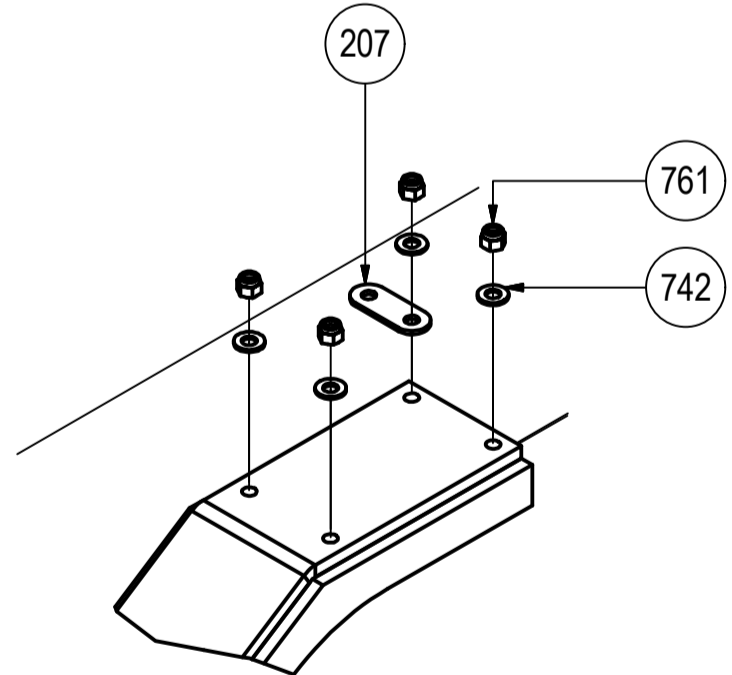
| ITEM | DESCRIPTION | ITEM QTY | HW STOCK NO. | DRG No. | MASS | MODEL No. |
|------|---|----------|--------------|--------------------|----------------|---|
| 1 | BASE FRAME | 1 | HW75032 | 03300-010-001 DW | 77.662 kg | 03300-010 |
| 2 | DRIVE WHEEL | 1 | HW75036 | 03300-020-001 DW | 49.093 kg | 03300-020 |
| 3 | HYDRAULIC OIL TANK | 1 | HW75033 | 03300-030-001 DW | 4.820 kg | 03300-030 |
| 4 | MECHANICAL LOCK | 1 | HW75044 | 03300-040-001 DW | 3.349 kg | 03300-040 |
| 201 | DRIVE AXLE - 100 OD - 163.5LG | 1 | HW75027 | 03300-000-010 DW | 2.738 kg | 03300-000-001 |
| 202 | SPACER - 32 OD x 21 ID - 6LG | 4 | HW75016 | 03300-000-011 DW | 0.022 kg | 03300-000-002 |
| 204 | CONTROL HANDLE LATCH - 120x112x10PL | 1 | HW75023 | 03300-000-011 DW | 0.348 kg | 03300-000-004 |
| 205 | PIN - 25 DIA HD x 16 DIA - 16LG | 2 | HW12051 | 03300-000-011 DW | 0.068 kg | 03300-000-005 |
| 207 | 65x25x3PL | 2 | HW75024 | 03300-000-011 DW | 0.032 kg | 03300-000-003 |
| 300 | 950x50x20PL | 2 | BPL02000003 | AS 0532-000-001 DW | 7.237 kg | AS 0532-000-001 |
| 301 | BOTTOM FIXED ARM | 1 | HW75012 | AS 0532-010-001 DW | 39.388 kg | AS 0532-010 |
| 302 | BOTTOM SLIDING ARM | 1 | HW75013 | AS 0532-020-001 DW | 29.322 kg | AS 0532-020 |
| 303 | TOP SLIDING ARM | 1 | HW75014 | AS 0532-030-001 DW | 15.433 kg | AS 0532-030 |
| 304 | TABLE TOP | 1 | HW75018 | AS 0532-040-001 DW | 94.255 kg | AS 0532-040 |
| 305 | SWIVEL TOP | 1 | HW75019 | AS 0532-050-001 DW | 26.160 kg | AS 0532-050 |
| 306 | CONTROL HANDLE | 1 | HW75020 | AS 0533-010-001 DW | 10.747 kg | AS 0533-010 |
| 307 | CONTROL HANDLE VALVE COVER | 1 | HW75021 | AS 0533-020-001 DW | 2.315 kg | AS 0533-020 |
| 600 | BEARING 6207-2RS1 (35IDx72ODx17W) | 1 | BE01028 | N/A | 0.273 kg | VC 0010-025 |
| 601 | BEARING 52 OD x 24 WIDE x 20 SHAFT | 4 | BE01023 | N/A | 0.062 kg | VC 0010-027 |
| 602 | THRUST BALL BEARING 51205 | 1 | BE01024 | N/A | 0.014 kg | VC 0010-030 |
| 603 | CYLINDER/ COUNTERBALANCE VALVE RH 3"BOREx4"ST 1.5"ROD | 1 | CP01202 | N/A | 15.808 kg | VC 050-011-LEFT-01 |
| 604 | CYLINDER/ COUNTERBALANCE VALVE LH 3"BOREx4"ST 1.5"ROD | 1 | CP01203 | N/A | 15.808 kg | VC 050-011-RIGHT-01 |
| 605 | SWIVEL CASTOR SINGLE WHEEL 1000 SERIES 250MM DIA | 2 | LH01012 | N/A | 24.854 kg | VC 0140-004 |
| 606 | BUFFER M607-25333-DS55 | 1 | BE10002 | N/A | 0.438 kg | VC 0310-003 |
| 607 | M-S EPMSYS | 1 | CP07314 | N/A | 1.562 kg | VC 0680-002 |
| 608 | PNEUMATIC/HYDRAULIC CONTROL KIT, CUSTOM 2011 | 1 | CP10016 | N/A | 4.490 kg | VC 0770-008 |
| 609 | ROLLER BALL TRANSFER LEMCOL L1753 | 6 | BH01034 | N/A | 0.283 kg | VC 1190-002 |
| 610 | GLYCADOR BUSH 18 OD x 16 ID x 20 LG | 16 | BE10020 | N/A | 0.008 kg | VC 1200-001 |
| 611 | GLYCADOR BUSH 23 OD x 20 ID x 20 LG | 4 | BE10015 | N/A | 0.016 kg | VC 1200-002 |
| 612 | TENSION SPRING - 35 OD x 4.0 DIA - 173LG | 2 | CP08005 | N/A | 0.194 kg | VC 0510-003 |
| 613 | R-CLIP 0.75" SHAFT | 2 | BH01008 | N/A | 0.033 lbmass | VC 0290-001 |
| 700 | BOLT - 1/4" UNC x 1" LG - HEX GRADE 8 ZP | 6 | NB01002 | N/A | 0.021 lbmass | BOLT - 1/4" UNC x 1" LG - HEX GRADE 8 ZP |
| 701 | BOLT - 1/4" UNC x 3" LG - HEX GRADE 8 ZP | 3 | NB01006 | N/A | 0.049 lbmass | BOLT - 1/4" UNC x 3" LG - HEX GRADE 8 ZP |
| 702 | BOLT - 5/16" UNC x 1" LG - HEX GRADE 8 ZP | 4 | NB01051 | N/A | 0.034 lbmass | BOLT - 5/16" UNC x 1" LG - HEX GRADE 8 ZP |
| 703 | BOLT - 3/8" UNC x 1.5" LG - HEX GRADE 8 ZP | 8 | NB01103 | N/A | 0.065 lbmass | BOLT - 3/8" UNC x 1.5" LG - HEX GRADE 8 ZP |
| 704 | BOLT - 3/8" UNC x 1.75" LG - HEX GRADE 8 ZP | 1 | NB01127 | N/A | 0.073 lbmass | BOLT - 3/8" UNC x 1.75" LG - HEX GRADE 8 ZP |
| 705 | BOLT - 3/8" UNC x 2.25" LG - HEX GRADE 8 ZP | 1 | NB01126 | N/A | 0.089 lbmass | BOLT - 3/8" UNC x 2.25" LG - HEX GRADE 8 ZP |
| 706 | BOLT - 1/2" UNC x 1.5" LG - HEX GRADE 8 ZP | 4 | NB01153 | N/A | 0.127 lbmass | BOLT - 1/2" UNC x 1.5" LG - HEX GRADE 8 ZP |
| 707 | BOLT - 1/2" UNC x 2" LG - HEX GRADE 8 ZP | 2 | NB01155 | N/A | 0.155 lbmass | BOLT - 1/2" UNC x 2" LG - HEX GRADE 8 ZP |
| 720 | SHSS - M12 - 16 x 50LG - CLASS 12.9 BLK | 8 | NB03918 | N/A | 0.129 kg | SHSS - M12 - 16 x 50LG - CLASS 12.9 BLK |
| 721 | SHSS - M16 - 20 x 50LG - CLASS 12.9 BLK | 4 | NB03919 | N/A | 0.226 kg | SHSS - M16 - 20 x 50LG - CLASS 12.9 BLK |
| 740 | WASHER - 1/4" FLAT HT GRADE 8 ZP | 16 | NB02002 | N/A | 0.006 lbmass | WASHER - 1/4" FLAT HT GRADE 8 ZP |
| 742 | WASHER - 3/8" FLAT HT GRADE 8 ZP | 18 | NB02004 | N/A | 0.009 lbmass | WASHER - 3/8" FLAT HT GRADE 8 ZP |
| 743 | WASHER - 1/2" FLAT HT GRADE 8 ZP | 4 | NB02005 | N/A | 0.018 lbmass | WASHER - 1/2" FLAT HT GRADE 8 ZP |
| 744 | WASHER - 5/8" FLAT HT GRADE 8 ZP | 26 | NB02006 | N/A | 0.049 lbmass | WASHER - 5/8" FLAT HT GRADE 8 ZP |
| 741 | WASHER - 5/16" SPRING ZINC | 4 | NB02502 | N/A | 0.00416 lbmass | WASHER - 5/16" SPRING ZINC |
| 746 | WASHER - 3/8" SPRING ZINC | 1 | NB01503 | N/A | 0.00664 lbmass | WASHER - 3/8" SPRING ZINC |
| 747 | WASHER - 1/2" SPRING ZINC | 4 | NB01504 | N/A | 0.01387 lbmass | WASHER - 1/2" SPRING ZINC |
| 760 | NUT - 1/4"UNC NYLOC GRADE 8 ZP | 7 | NB03501 | N/A | 0.010 lbmass | NUT - 1/4"UNC NYLOC GRADE 8 ZP |
| 761 | NUT - 3/8"UNC NYLOC GRADE 8 ZP | 9 | NB03503 | N/A | 0.021 lbmass | NUT - 3/8"UNC NYLOC GRADE 8 ZP |
| 762 | NUT - 1/2"UNC NYLOC GRADE 8 ZP | 2 | NB03504 | N/A | 0.048 lbmass | NUT - 1/2"UNC NYLOC GRADE 8 ZP |
| 763 | NUT - M12 NYLOC CLASS 10.9 ZP | 8 | NB03521 | N/A | 0.017 kg | DIN 985 - NYLOC M12 HEX CLASS 10.9 ZP |
| 764 | NUT - M16 NYLOC CLASS 10.9 ZP | 4 | NB03520 | N/A | 0.033 kg | DIN 985 - NYLOC M16 HEX CLASS 10.9 ZP |



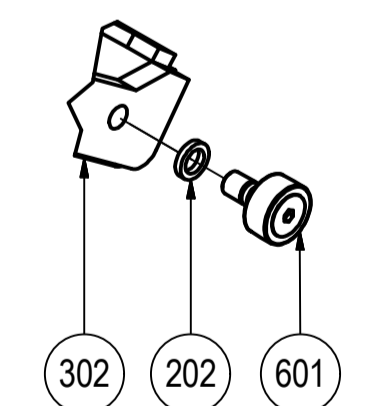
BELLY PAN HOIST
 MODEL No. 03300-001
 PART No. TL10018
 SCALE 1 : 12



DETAIL A
SCALE 1 : 5



DETAIL B
SCALE 1 : 5



DETAIL C
SCALE 1 : 6

ISSUED FOR CONSTRUCTION

| REV | ENR | DESCRIPTION | RM DRAFT | CHECKED | DATE |
|-----|----------|-------------------------|----------|---------|------------|
| A | EN100004 | ISSUED FOR CONSTRUCTION | | | 21/03/2013 |

| | | | | |
|-----------------------------|--------------------------|--|---|-----------|
| DESIGNED drewk | ENG BY ENG MGR | <small>A.S.N. 43 003 024 033</small> | TRILIFT DT BELLY PAN HOIST EXPLODED VIEW | |
| DRAWN drewk 5/02/2013 | ENG BY 18/05/2010 | | PART No. TL10018 | REV 1 |
| CHK BY 18/05/2010 | CLIENT APP 18/05/2010 | DRG No. | DESCRIPTION | MODEL No. |
| | | | 03300-000-002 DW | A |